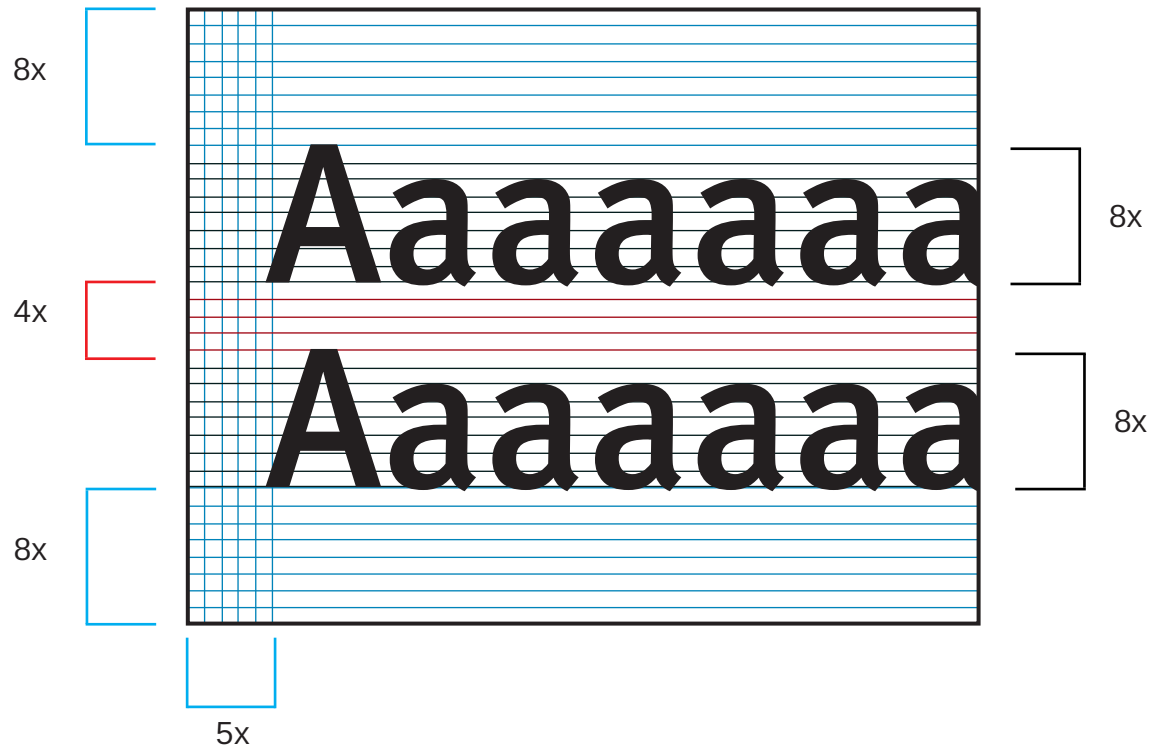
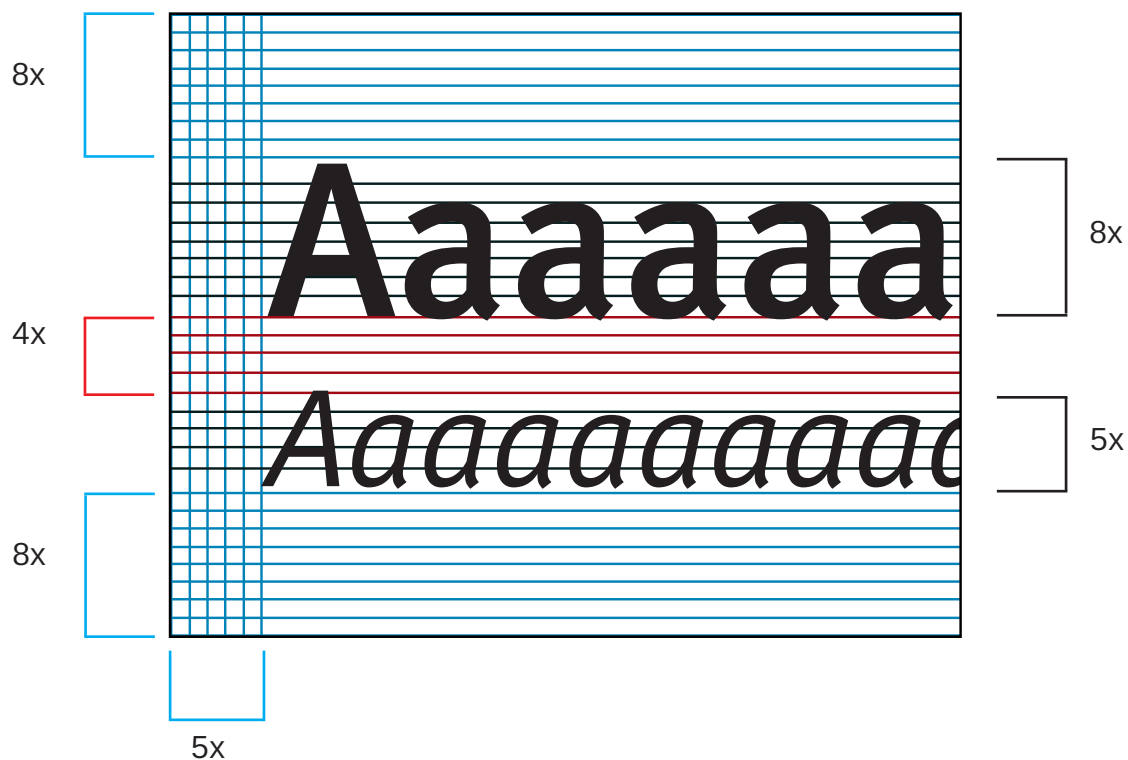


3.1 Identificação principal backstage



x = 4,5mm

3.2 Identificação secundária backstage



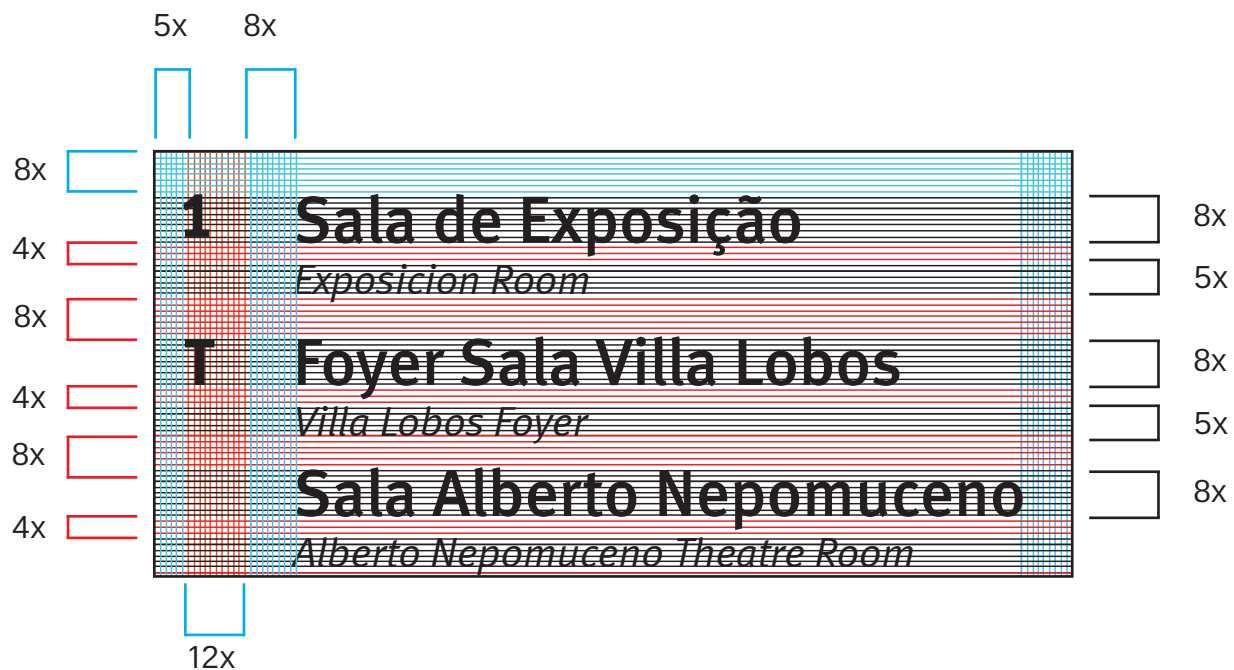
x = 7mm

3.3 Placa de parede média - frontstage

x = 2,7mm

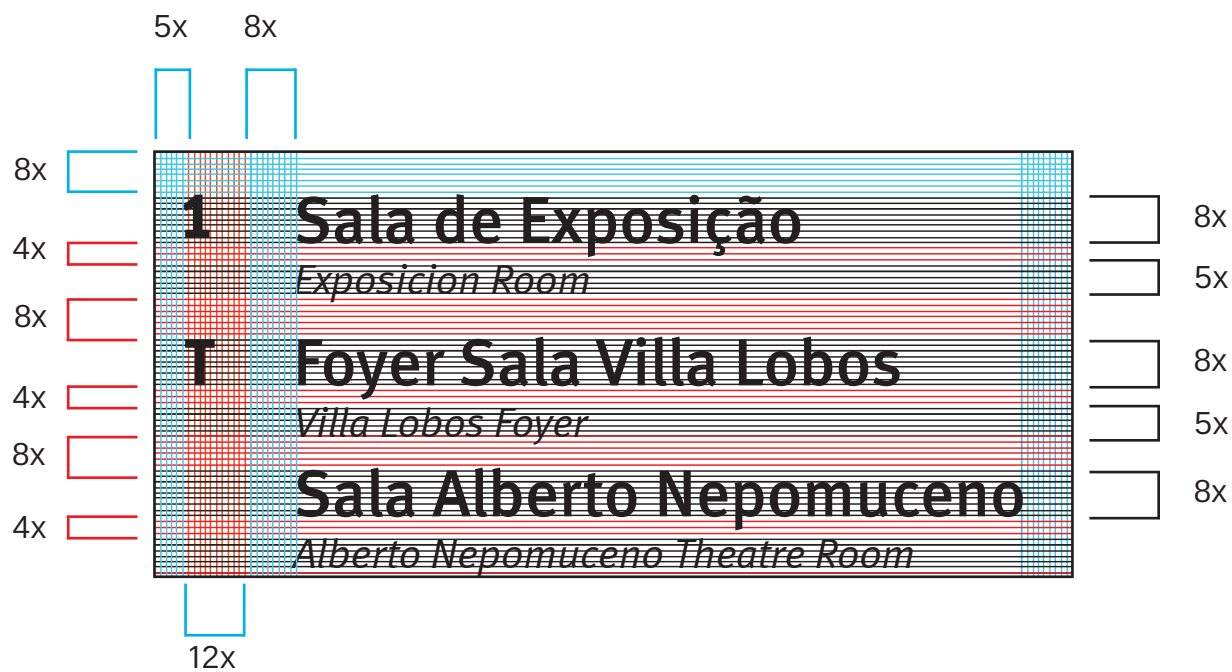
1	Sala de Exposição <i>Exposicion Room</i>
T	Foyer Sala Villa Lobos <i>Villa Lobos Foyer</i>
	Sala Alberto Nepomuceno <i>Alberto Nepomuceno Theatre Room</i>
	Recepção <i>Reception</i>
	Bar <i>Bar</i>
	Telefones <i>Public Telephones</i>
	Bilheteria <i>Box Office</i>
S1	Sala Villa Lobos <i>Villa Lobos Theatre Room</i>
	Camarote Presidencial <i>Presidential Cabin</i>
S2	Camarins 201 a 207 <i>Dressing Room 201 to 207</i>
S3	Camarins 301 a 308 <i>Dressing Room 301 to 308</i>

Obs.: Acréscimo de 30mm em cada margem para inserção do ferrolho

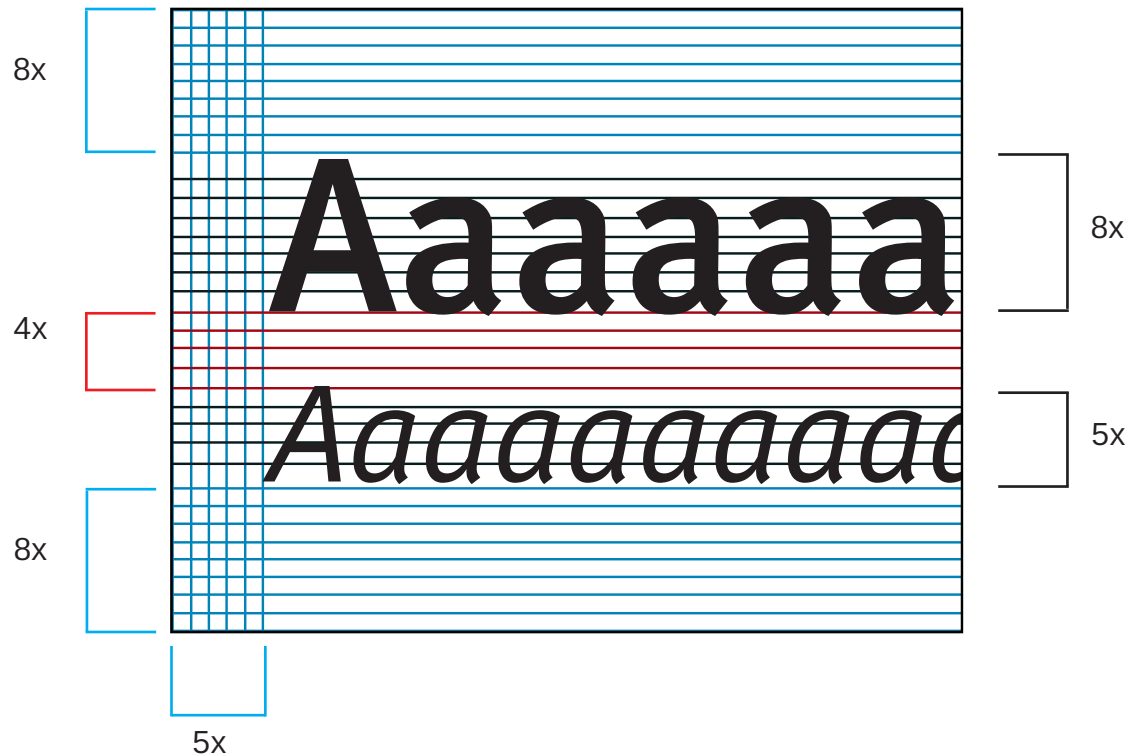


3.4 Placa de parede média - backstage

x = 2,7mm



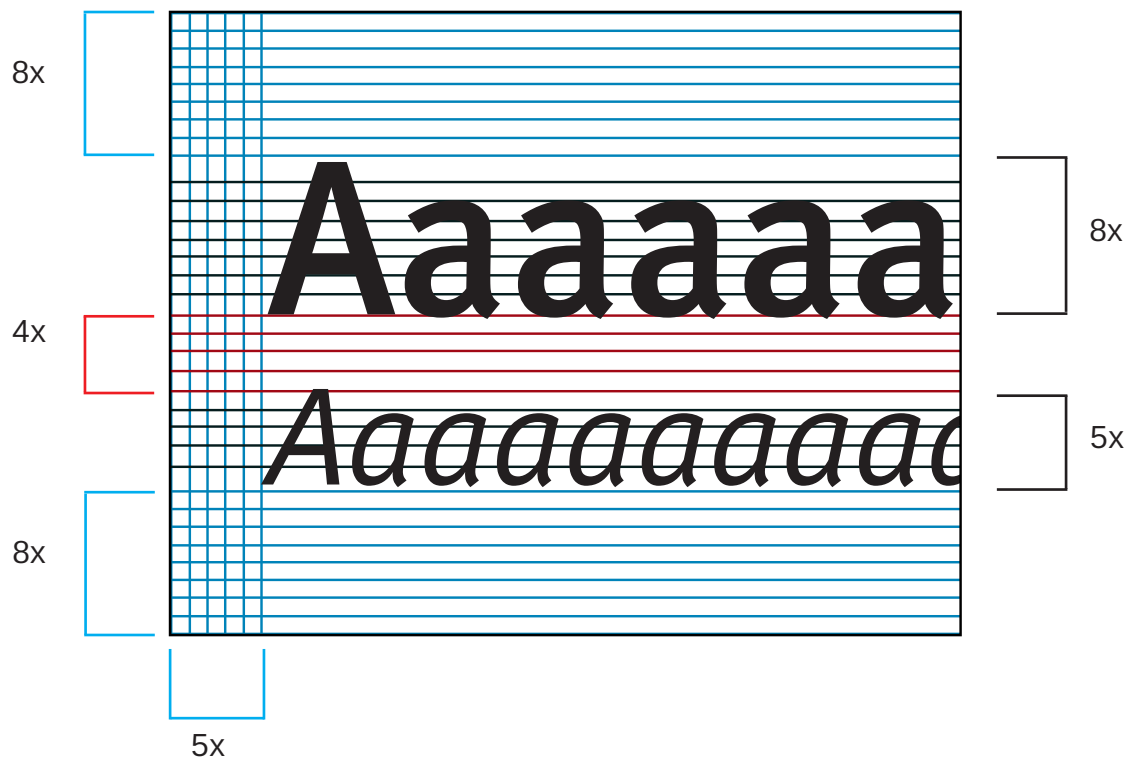
3.5 Identificação de porta - frontstage



Obs.: Acréscimo de 30mm em cada margem para inserção do ferrolho

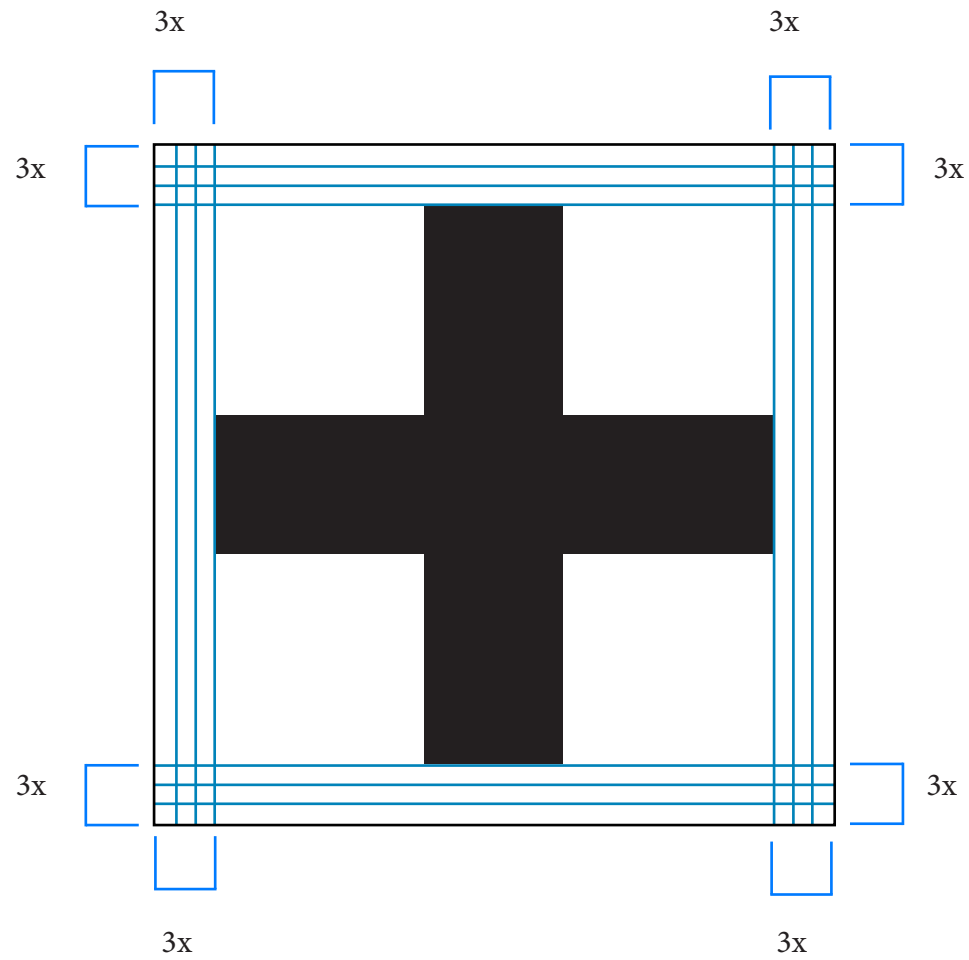
x = 2,7mm

3.6 Identificação de porta - backstage



x = 2,7mm

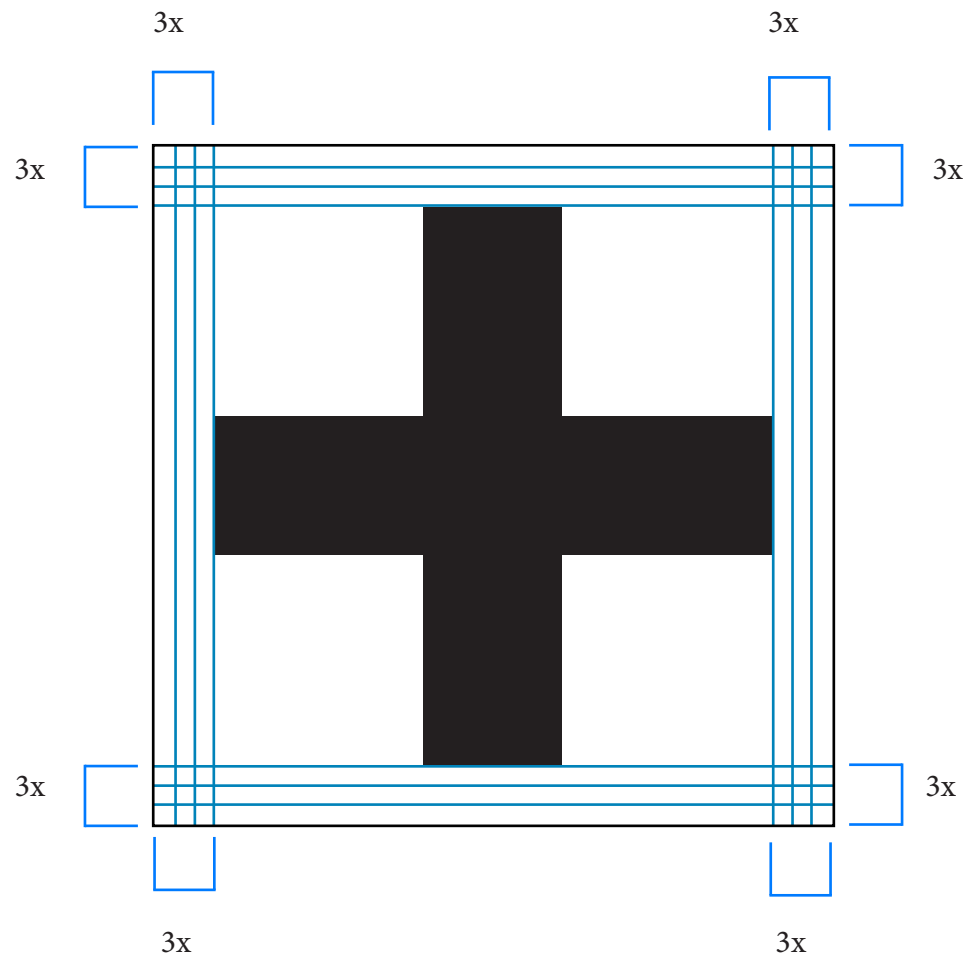
3.7 Pictograma frontstage



Obs.: Acréscimo de 30mm em cada margem para inserção do ferrolho

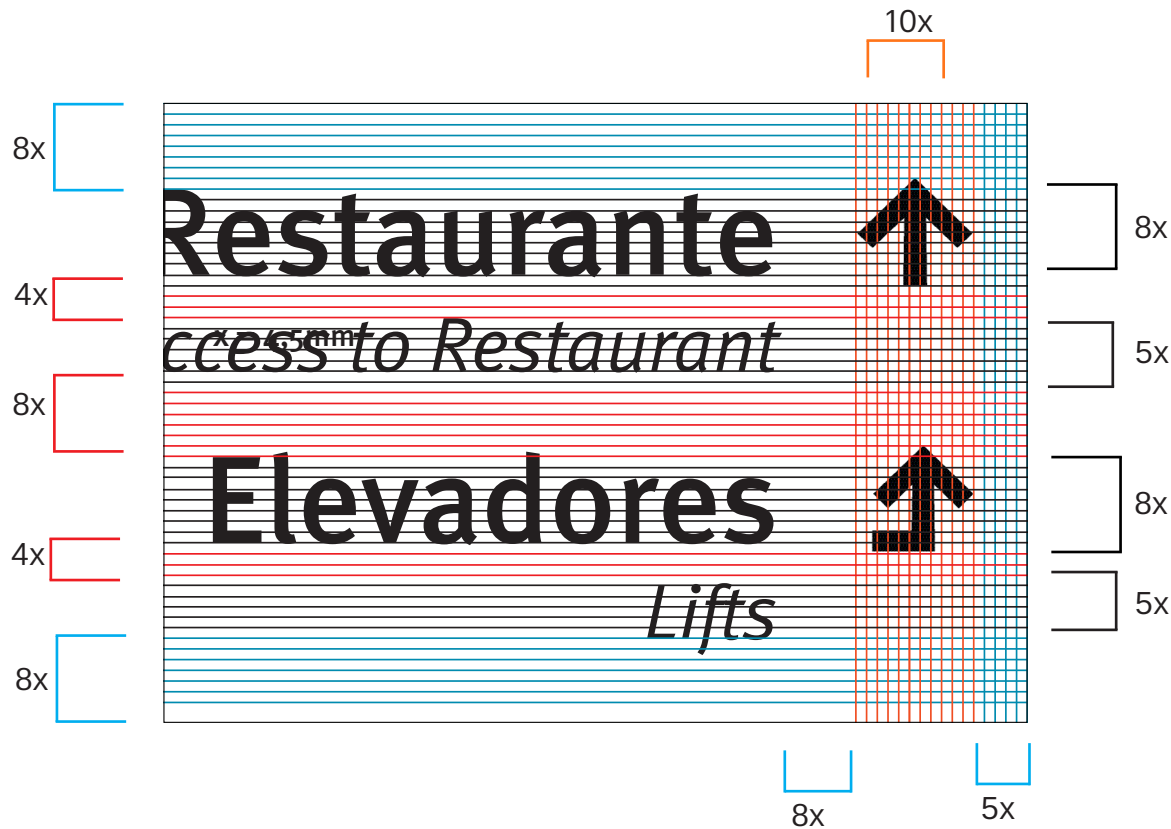
$x = 2,7\text{mm}$

3.8 Pictograma backstage



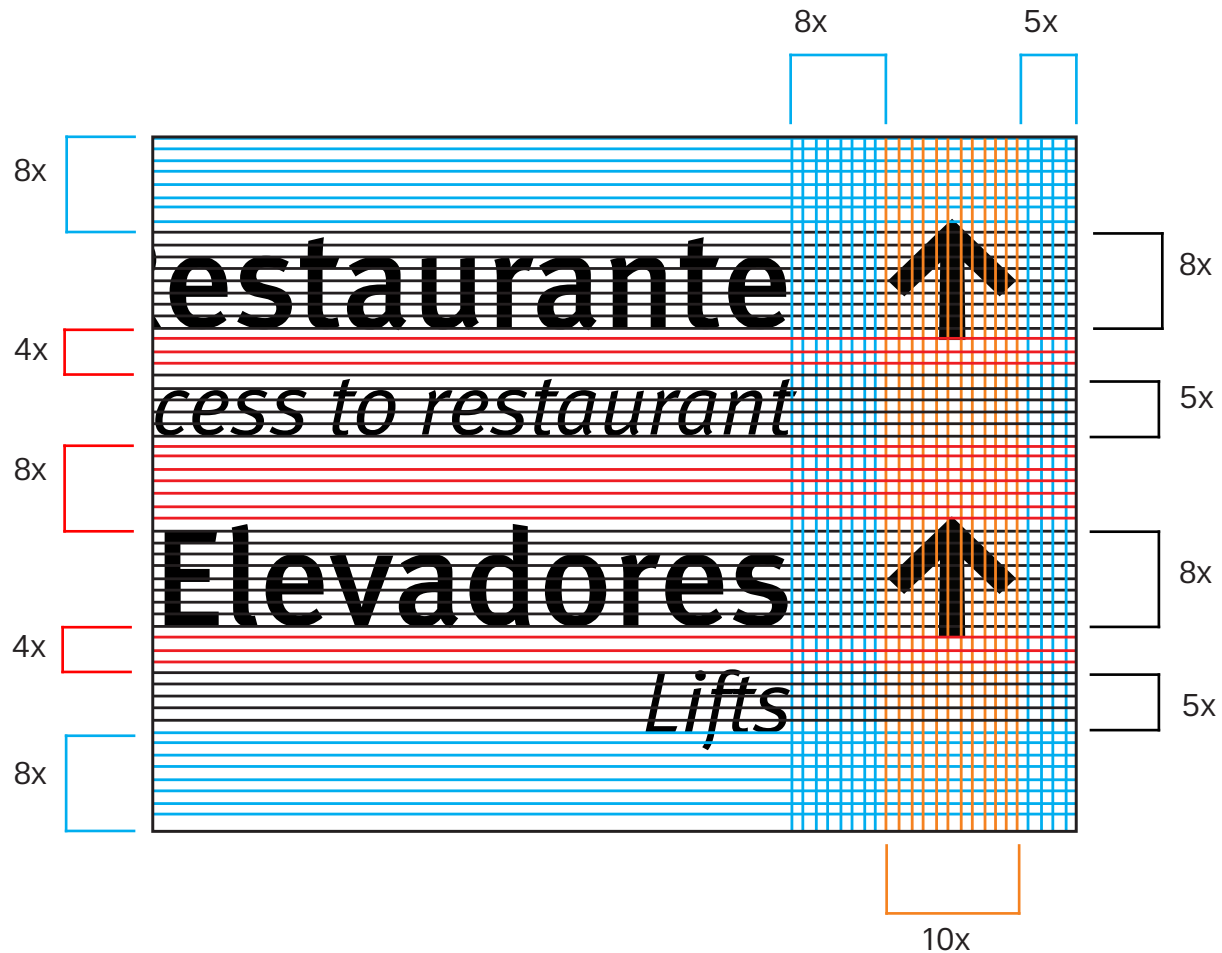
$x = 2,7\text{mm}$

3.9 Direcional - frontstage



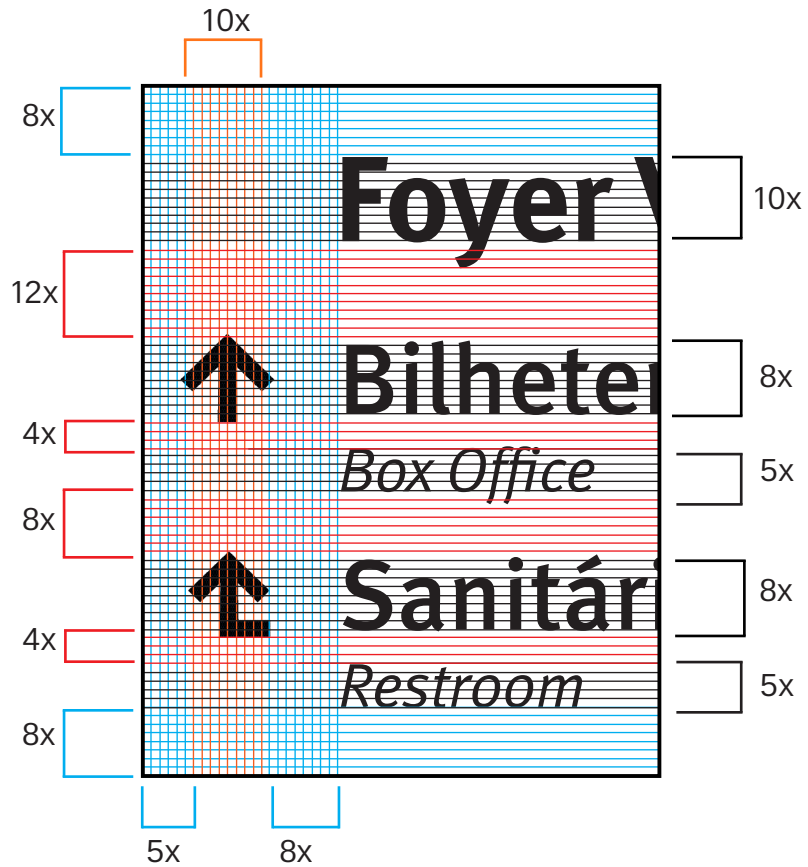
x = 4,5mm

3.9 Direcional - backstage



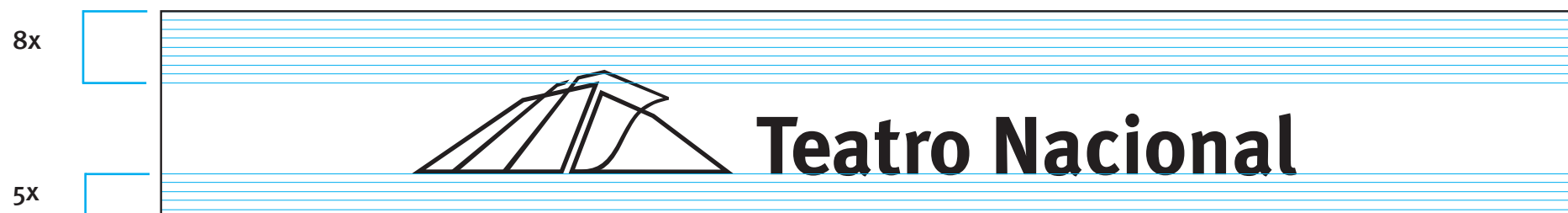
x = 3 mm

3.9 Direcional principal - Villa Lobos e Martins Penna



x = 4,5mm

3.10 Marca localizada na direcional principal - Villa Lobos e Martins Penna



$x = 4,5\text{mm}$